



## Holiday's Packaging Price List 2024



From \$1,35 per unit

Yule Log box, Yule Log board, Crown,  
Kings' cake bag and more

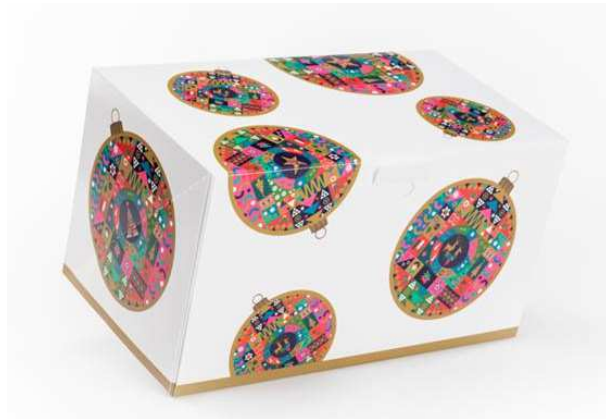
[www.allchefsupplies.com](http://www.allchefsupplies.com)

833-444-(CHEF) 2433

# Yule Log Box



Douceur Nordique



Vivid

New Size and design

For Yule log board see page 6



New chic design

Mosaic

All items are in limited edition

Yule Box - Douceur Nordique

Item Code	Size in centimeter	Size in inch	Case Qty	Unit cost	Case Price
MI-DOUNRD 201111	20 x 11 x 11	7-7/8 x 4-1/4 x 4-1/4	25	1.35	\$33.60
MI-DOUNRD 251111	25 x 11 x 11	9-3/4 x 4-1/4 x 4-1/4	25	1.43	\$35.60
MI-DOUNRD 351111	35 x 11 x 11	11-3/4 x 4-1/4 x 4-1/4	25	1.83	\$42.25
MI-DOUNRD 201313	20 x 13 x 13	7-7/8 x 5-1/8 x 5-1/8	25	2.39	\$59.75
MI-DOUNRD 251313	25 x 13 x 13	9-3/4 x 5-1/8 x 5-1/8	25	2.44	\$60.85
MI-DOUNRD 301313	30 x 13 x 13	11-3/4 x 5-1/8 x 5-1/8	25	2.58	\$64.50

Yule Box - Mosaic

Item Code	Size in centimeter	Size in inch	Case Qty	Unit Cost	Case Price
MIMOS201414	20 x 14 x 14	7-7/8 x 5-1/2 x 5-1/2	50	1.70	\$84.95
MIMOS251414	25 x 14 x 14	9-3/4 x 5-1/2 x 5-1/2	50	1.83	\$91.59
MIMOS301414	30 x 14 x 14	11-3/4 x 5-1/2 x 5-1/2	50	2.28	\$114.15

Yule Box - Vivid

Item Code	Size in centimeter	Size in inch	Case Qty	Unit Cost	Case Price
MIVIVID201414	20 x 14 x 14	7-7/8 x 5-1/2 x 5-1/2	50	1.70	\$84.95
MIVIVID251414	25 x 14 x 14	9-3/4 x 5-1/2 x 5-1/2	50	1.83	\$91.59
MIVIVID301414	30 x 14 x 14	11-3/4 x 5-1/2 x 5-1/2	50	2.28	\$114.15

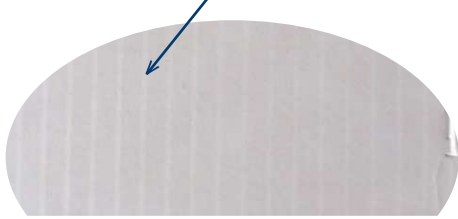


# Yule Log Box

White stripes



Varnish stripes line for upscale look



New lock system

Top nochs to fit square 3-1/2 x 3-1/2" card to custom your Yule box

For Yule log board see page 6

White stripes

Item Code	Size in centimeter	Size in inch	Case Qty	Unit cost	Case Price
MIWSYL201111	20 x 11 x 11	7-7/8 x 4-1/4 x 4-1/4	50	1.52	\$75.75
MIWSYL251111	25 x 11 x 11	9-3/4 x 4-1/4 x 4-1/4	50	1.80	\$89.60
MIWSYL301111	30 x 11 x 11	11-3/4 x 4-1/4 x 4-1/4	50	1.98	\$98.95
MIWSYL351111	35 x 11 x 11	13-3/4 x 4-1/4 x 4-1/4	50	2.50	\$124.85
MIWSYL401111	40 x 11 x 11	15-3/4 x 4-1/4 x 4-1/4	50	2.57	\$135.50
MIWSYL201414	20 x 14 x 14	7-7/8 x 5-1/2 x 5-1/2	50	1.96	\$97.95
MIWSYL251414	25 x 14 x 14	9-3/4 x 5-1/2 x 5-1/2	50	1.99	\$99.25
MIWSYL301414	30 x 14 x 14	11-3/4 x 5-1/2 x 5-1/2	50	2.57	\$128.50
MIWSYL351414	35 x 14 x 14	13-3/4 x 5-1/2 x 5-1/2	50	2.87	\$143.25
MIWSYL401414	40 x 14 x 14	15-3/4 x 5-1/2 x 5-1/2	50	2.97	\$148.85

# Yule Log Box

Window Yule Log Box



For Yule log board see page 6

HOLIDAY SEASON 2024

YULE LOG BOX

All items are in limited edition, first orders, first delivery

Yule Box

Item Code	Size in centimeter	Size in inch	Case Qty	Unit Cost	Case Price
TH-WYB221111	22 x 11 x 11	7-5/8 x 4-1/4 x 4-1/4	25	1.70	\$42.65
TH-WYB251111	25 x 11 x 11	9-7/8 x 4-1/4 x 4-1/4	25	1.87	\$46.79
TH-WYB321111	32 x 11 x 11	12-5/8 x 4-1/4 x 4-1/4	25	1.97	\$49.25

www.allchefsupplies.com

833-444-(CHEF) 2433



# Yule Log Box

Blow Out... Limited quantity



All items are in limited edition, first orders, first delivery

Yule Box

Item Code	Description	Size in centimeter	Size in inch	Case Qty	Unit Cost	Case Price
TH-JAD201311	J'Adore	20 x 13 x 10	7-7/8 X 5-1/8 X 4-3/8	25	1.70	\$42.50
MI-SHDS301111	ShadesTurquoise	30 x 11 x 11	11-3/4 x 4-1/4 x 4-1/4	25	2.39	\$59.75
TH-KBLAN201313BB	White	20 x 13 x 13	7-7/8x 5-1/8 x 5-1/8	25	1.25	\$31.25
TH-KBLAN301313	White	40 x 13 x 11	15-3/4 x 5-1/8 x 4-1/4	25	1.90	\$47.50

# Yule Log Board

Scalloped board



Round corner



Straight board

YULE LOG BOARD

## Log Board - Scalloped

Item Code	Size in centimeter	Size in inch	Case Qty	Unit cost	Case Price
TH-SC20302512	24 x 12	9-3/4 x 4-3/4	50	0.38	\$18.95

## Log Board - Straight & Round corner

Item Code	Size in centimeter	Size in inch	Case Qty	Unit cost	Case Price
TH-RC1913	19 x 13	7-1/2 x 5-1/8	50	0.34	\$16.95
TH-RC2913	29 x 13	11-3/8 x 5-1/8	50	0.42	\$20.75
TH-RC4413	44 x 13	17-1/4 x 5-1/8	50	0.61	\$30.50
TH-RC5813	58 x 13	15-3/8 x 5-1/8	50	0.82	\$42.15

## Log Board - Straight

Item Code	Size in centimeter	Size in inch	Case Qty	Unit cost	Case Price
TH-ST1910	19 x 10	7-1/2 x 4	50	0.24	\$12.20
TH-ST2410	24 x 10	9-3/8 x 4	50	0.28	\$13.86
TH-ST2910	29 x 10	11-3/8 x 4	50	0.32	\$15.80
TH-ST3410	34 x 10	13-3/8 x 4	50	0.35	\$17.60
TH-ST3910	39 x 10	15-3/8 x 4	50	0.40	\$20.21
TH-ST1912	19 x 12	7-1/2 x 4-3/4	50	0.34	\$16.95
TH-ST2912	29 x 12	11-3/8 x 4-3/4	50	0.42	\$20.75
TH-ST3412	34 x 12	13-3/8 x 4-3/4	50	0.43	\$21.50
TH-ST3912	39 x 12	15-3/8 x 4-3/4	50	0.46	\$23.15
TH-ST4912	49 x 12	19-1/4 x 4-3/4	50	0.41	\$31.00

# Yule Decoration

Make the Holiday... more Holiday  
 Decoration for your Holiday Yule Logs, cakes and pastries



RO-GPOL218B48



RO-G/47/B72



RO-G903B144



RO-G61B50



RO-G76B144



RO-G64B50



RO-GPOL269B48



RO-G740B100



RO-G9B72

Decoration - figurines

Item Code	Description	Height inch	Height mm	Case Qty	Case Price
RO-GPOL218B48	Elan	1-1/2	40	48	\$64.16
RO-G/47/B72	Small Drums	1	25	72	\$48.50
RO-G61B50	Ornament Balls	1-1/2	40	50	\$46.40
RO-G64B50	Ornament Balls Matte 6 Assort	1-1/2	40	50	\$38.50
RO-G9B72	House Xmas tree	3/4	20	72	\$49.75
RO-G903B144	Snowman	1-1/2	40	144	\$65.75
RO-GPOL269B48	House & Christmas Tree & Train	1-3/8	35	48	\$45.89
RO-G740B100	Red Santa	1-3/8	35	100	\$95.05
RO-G76B144	Bambi Cerf	2-1/8	55	144	\$83.50

All items are in limited edition

www.allchefsups.com - 833-444-(CHEF) 2433

# Yule Decoration



Make the Holiday... more Holiday  
 Decoration for your Holiday Yule Logs, cakes and pastries



RO-G4GB300



RO-G4SB300



RO-G106 Holly



RO-G1006GB72



RO-60MIX-V/B50



RO-G681B144



G 303 S



G 303 G



RO-G601 /144

RO-G597/144

DECORATION

Decoration - figurines

Item Code	Description	Height inch	Heightmm	Case Qty	Case Price
RO-G4GB300	Saw & Axe Gold	1-1/2	40	300	\$38.75
RO-G4SB300	Saw & Axe Silver	1-1/2	40	300	\$38.75
RO-G1006GB72	Music Instruments	2-1/8	55	72	\$38.99
RO-60MIX-V/B50	Christmas Tree Green	2-1/8	55	50	\$45.25
RO-G681B144	Christmas Tree & Red Balls	2-1/8	55	144	\$46.75
RO-303G	Christmas Tree Gold	2-1/8	55	144	\$45.25
RO-303S	Christmas Tree Silver	2-1/8	55	144	\$37.85
RO-G106 Holly	Holly 3 Leaves Silver	2	50	144	\$31.30
RO-G116/33G	Holly 3 Leaves Gold	2	50	144	\$31.30
RO-G116/33V	Holly 3 Leaves Green	2	50	144	\$31.30
RO-G597/144	Square Gift Box	5/8	15	144	\$38.58
RO-G601/144	Rectangular Gift Box	1	25	144	\$39.67

All items are in limited edition

www.allchefsupplies.com - 833-444-(CHEF) 2433

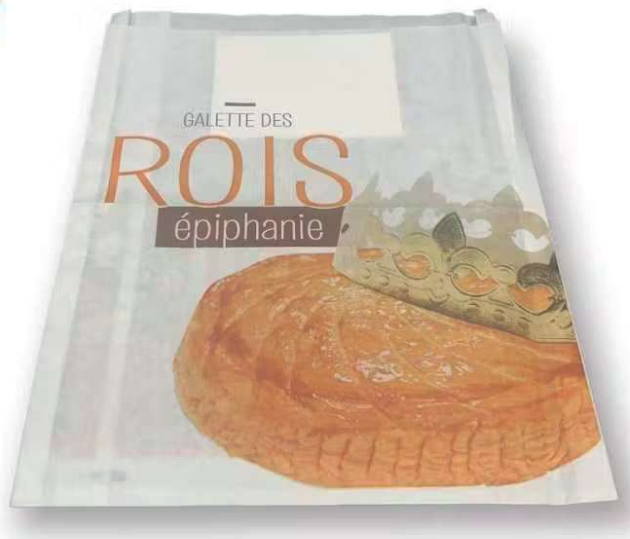




# Crown & Kings' Cake Bag



Crown



Extra Greaseproof Kings' Cake Bag



Gold Crown

Item Code	Item	Description	Case Qty	Unit cost	Case Price
900 003	Crown	Gold	100	0.25	\$33.35

Printed Galette Bag Extra greaseproof resistance

Item Code	Size in centimeter	Size in inch	Case Qty	Unit cost	Case Price
900 004	26 x 3 x 32	10-1/4 x 1-1/8 x 12-5/8	100	0.25	\$25.00
900 005	30 x 3 x 36	11-3/4 x 1-1/8 x 14-1/8	100	0.30	\$49.15

# Terms and conditions

## General condition of sale

**Minimum Order:** All Chefs Supplies, Inc requires a wholesale minimum order of \$250.00. Handling fee will be charged accordingly.

**Shipping Charges:** FOB Point of Origin North Hollywood - CA. All orders will be shipped UPS Ground unless otherwise requested. Charges are based on UPS published rates and restrictions less All Chefs Supplies, Inc. UPS discounts. All non-standard and over-sized packages may result in higher shipping fees as per UPS published rates. All Chefs Supplies may back-charge fees incurred from UPS for incorrect shipping address information. Please check your orders carefully. All Chefs Supplies, Inc. will assume no responsibility for missing shipments to any addresses.

**Handling Charges:** All invoices will include a handling fee which will be adjusted accordingly if orders are \$50 or lower. Will Call Orders: 48 hours minimum advance notice is required during business and opening hours excluding weekends and holidays. 1 location to pick up from in North Hollywood - CA

**Order Processing Time:** All orders of in-stock items will be shipped within 3 business days of receipt of order or sooner, conditions allowing. All Chefs Supplies, Inc. is not responsible for delays resulting from incomplete or insufficient order information. International orders must be held until verification of compliance with local and international customs laws and regulations and with UPS or other carriers when requested...

NOTE: If you need your order to arrive by a specific date, please provide that information in the notes area during checkout & call our customer service staff to request a rush on processing.

**Quotes:** Quotes are valid until the end of the business day in which they are provided, Pacific Standard Time. Prices are subject to change without notice.

**Pricing:** Orders are accepted on the condition that they are billed at the current price on the day of shipment. Prices are subject to change without notice.

*No returns accepted on holiday preorders, NO EXCEPTION.*

**Other Returns:** Items returned due to a customer's error can be returned at the customer's expense. These items must be in their original condition and packaging when received by All Chefs Supplies, Inc. in order to receive a credit or refund. Returns which are received by, All Chefs Supplies, Inc.: Broken, Soiled, Opened and or incomplete with products missing will be declared UNACCEPTABLE and will not be refunded or credited to customer and will be available for pick up at our North Hollywood location or will be shipped back to the customer at the customer's request and at customer's expense. All returned items are subject to a 25% restocking fee and MUST HAVE and REQUIRE a return authorization code.

**Shortages / Overages / Errors:** Please report shortages, overages, incorrect or defective merchandise to All Chefs Supplies, Inc. upon receipt of the product. All Chefs Supplies, Inc. will determine if an error occurred and if the entire shipment was received before credit or replacement product is issued. A return shipping label will be issued to the customer for any overages, defective products, or items which need to be returned to, All Chefs Supplies, Inc. Please pack return items carefully to avoid damage in shipping to All Chefs Supplies, Inc. NOTICE: Regarding Breakage When your shipment is delivered, please follow these instructions: Any carton that appears to be damaged or altered in any way must be opened and inspected. If damage is not detected upon delivery, your claim may not be fully honored. You must contact the shipping carrier and All Chefs Supplies, Inc. immediately. The products you ordered and that are invoiced were given to the carrier in their original perfect condition and were packed with great care by our experienced packers, and as per shipping carrier's requirements. The carrier is responsible for lost or damaged merchandise.

When any merchandise is received in damaged condition, take pictures, note the time, place of delivery, the number of damaged cartons or products and make a detailed claim immediately with the carrier. Keep the breakage in the original carton and packaging for inspection by the shipping carrier if later needed.

**PAYMENT:** All orders are shipped on a prepaid basis, unless customers have an established credit history with All Chefs Supplies, Inc. All first orders are shipped on a prepaid basis. In order to obtain credit terms, customers need to fill up a credit application and sign a personal guaranty. No credit terms can and will be established otherwise: NO exceptions.

We accept most major credit cards with an additional fee of 3.5%. We accept payment with Square-Zelle and Paypal. We also accept Quickbook direct payments.

International orders and out of state orders require a credit card authorization form to be signed by the card holder.

Holiday orders require a 50% deposit at time of order and the balance of the total invoice including shipping upon shipping departure. Sales Taxes apply for California unless we receive a valid state/city or county resale license from a client.

INFO@ALLCHEFSUPPLIES.COM

WWW.ALLCHEFSUPPLIES.COM